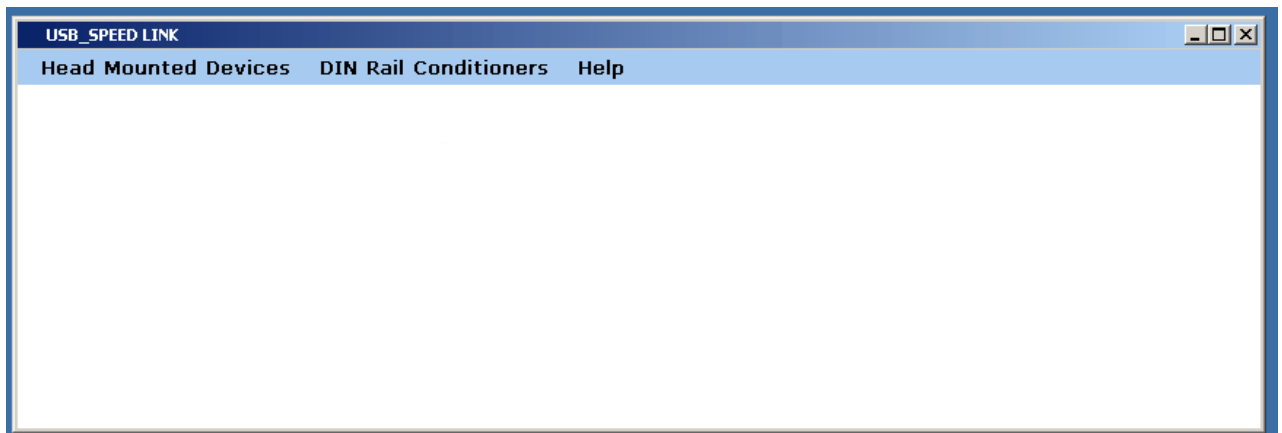
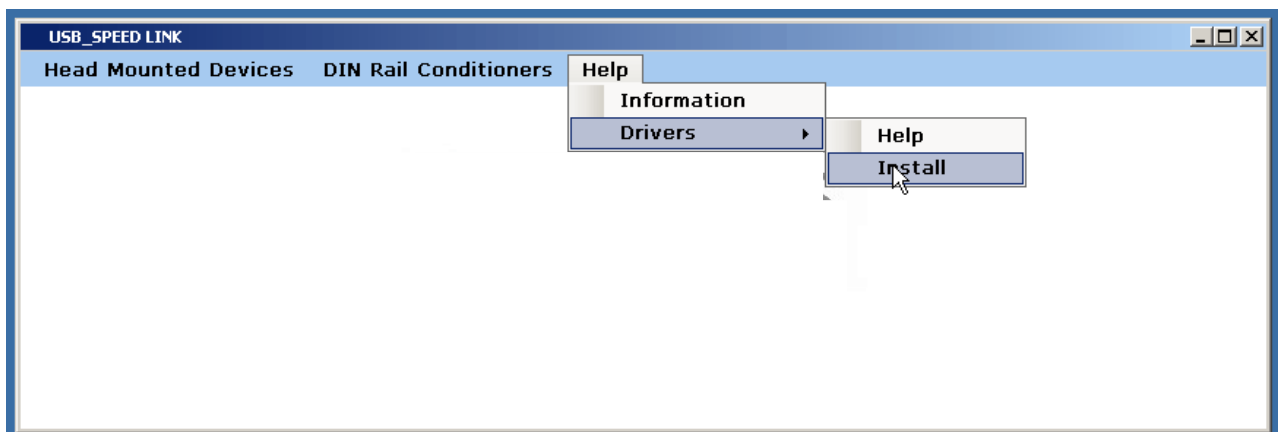


IMPORTANT !

Run software by clicking the desktop USBSpeedLink icon.

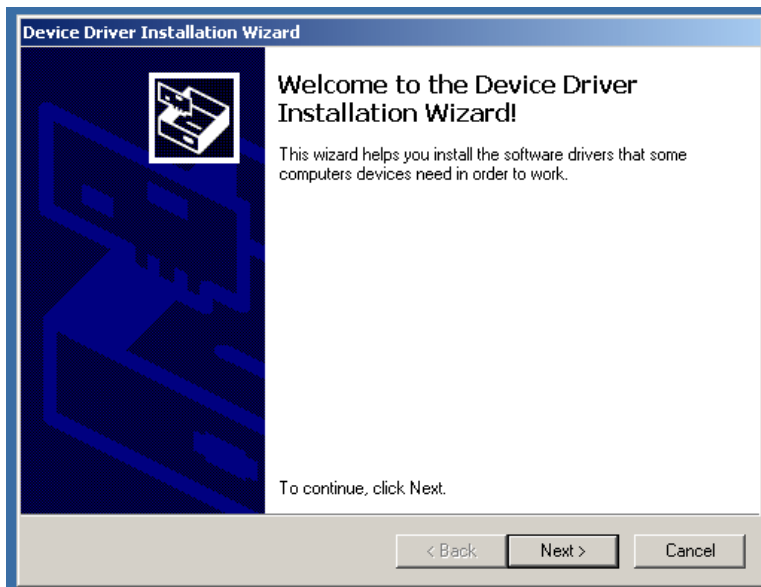


At this stage decide if the USB driver package is required. If the software package USBLink is already installed on the machine no further action is required - USBLink usb Driver work with this package.
If USBLink is not installed you will need to install the driver package by using the install option in the help menu.

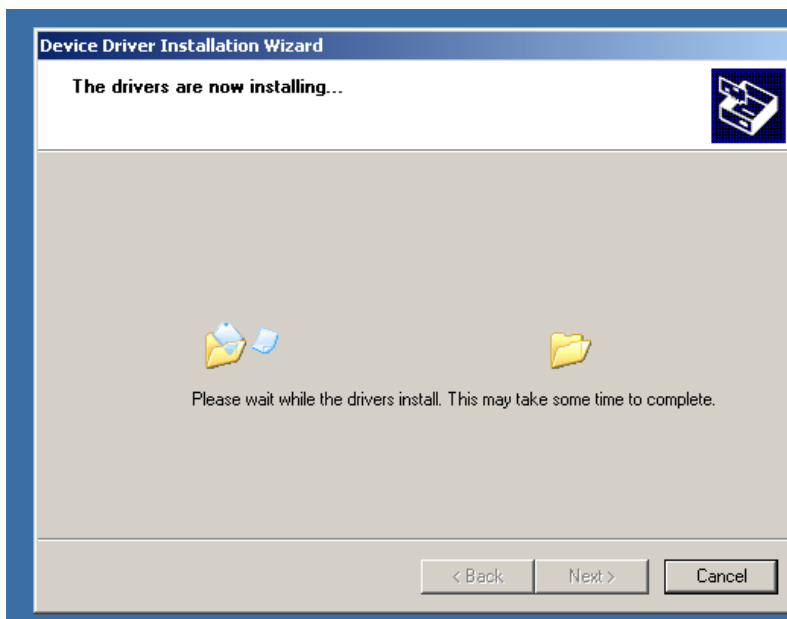


Click “Install” and follow the instructions listed below for either 32 bit or 64 bit machines.

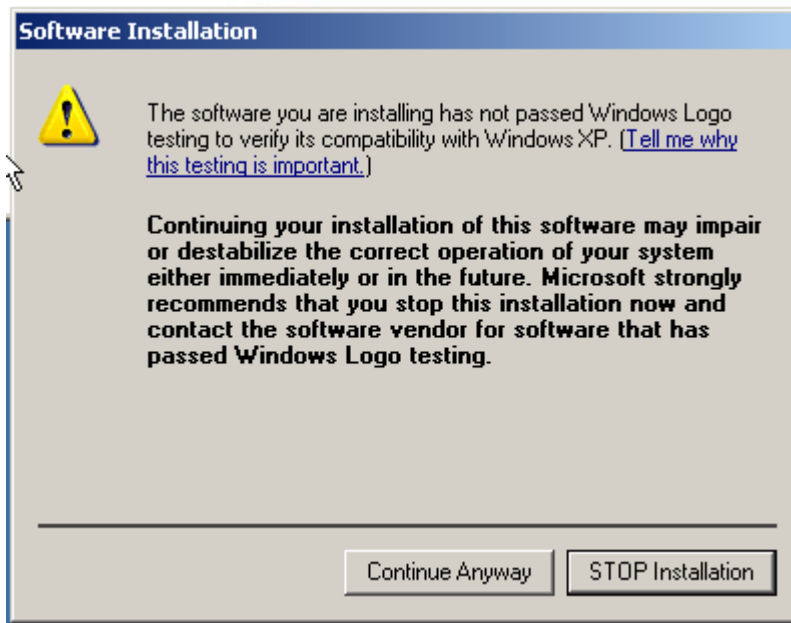
32 Bit driver install



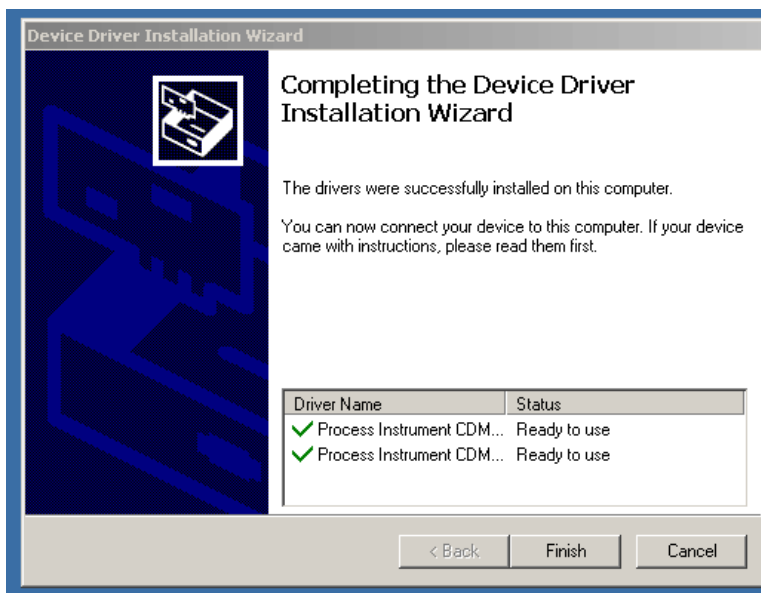
The above box will appear. Click “Next” Button.



The driver install will start.

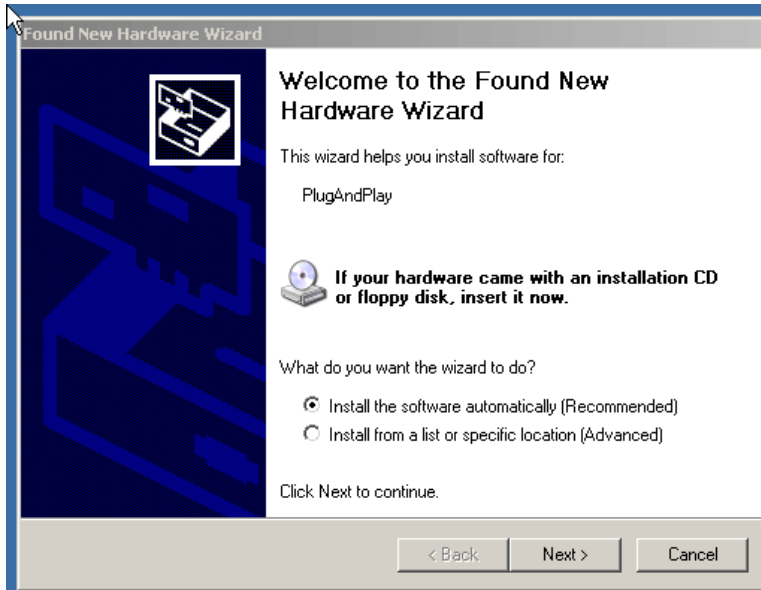


At some stage the following warning box will appear. Click “Continue Anyway”.



Once the driver install has finished the above box will appear. Click “Finish”

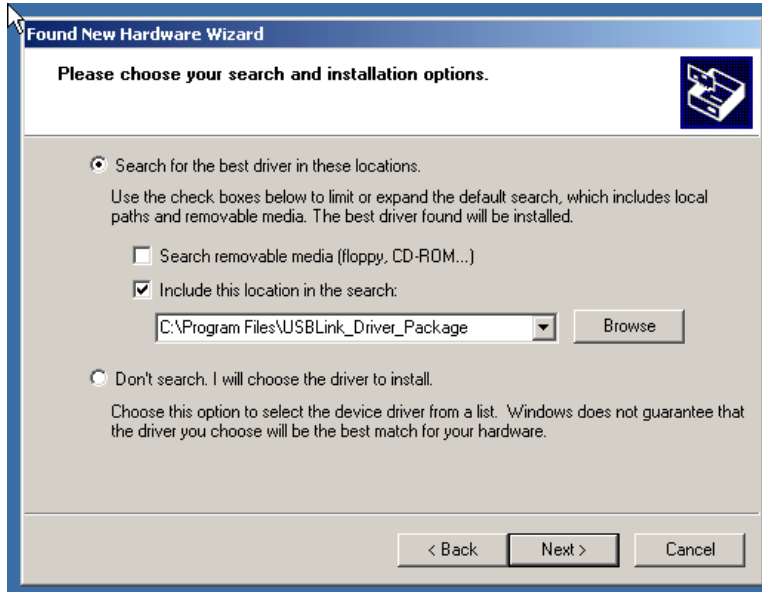
Now Connect a device to the USB port on the machine. The following box will appear.



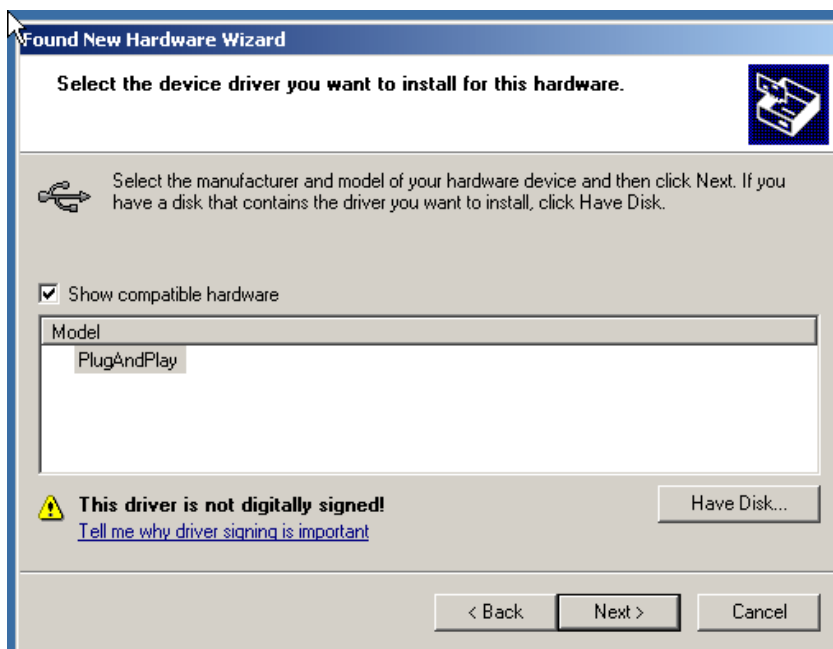
Check the Install from a list or specific location radio button.



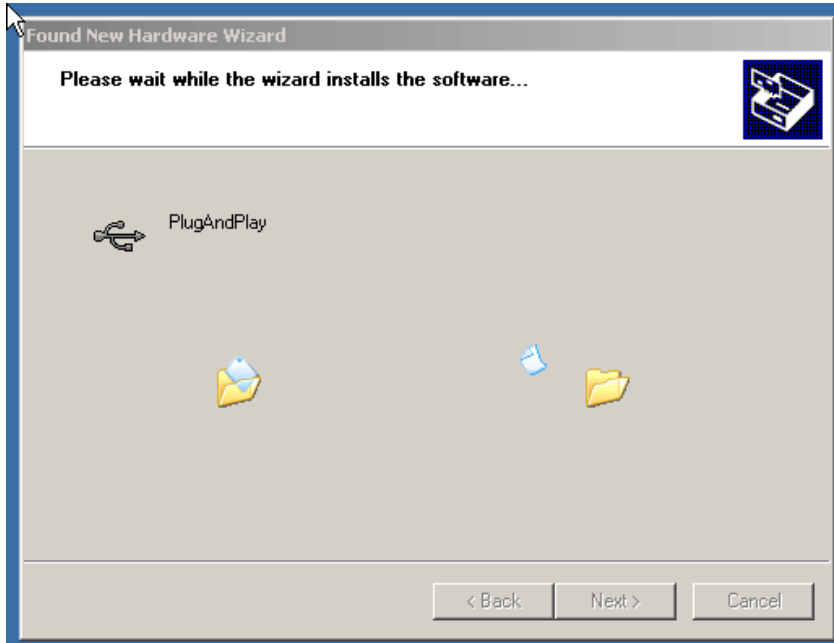
Click the “Next” Button.



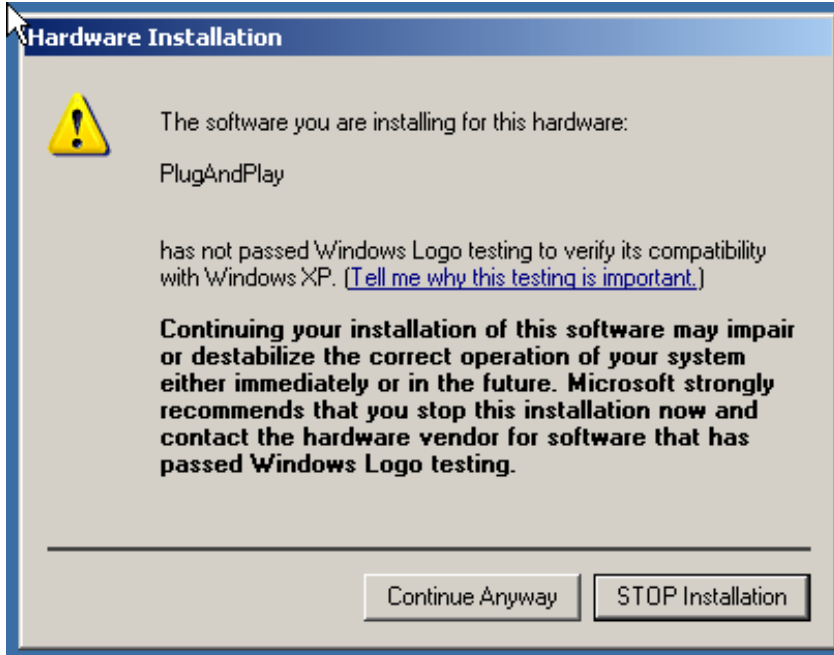
The above screen will appear. Check the Don't search. I will choose the driver to install radio button.



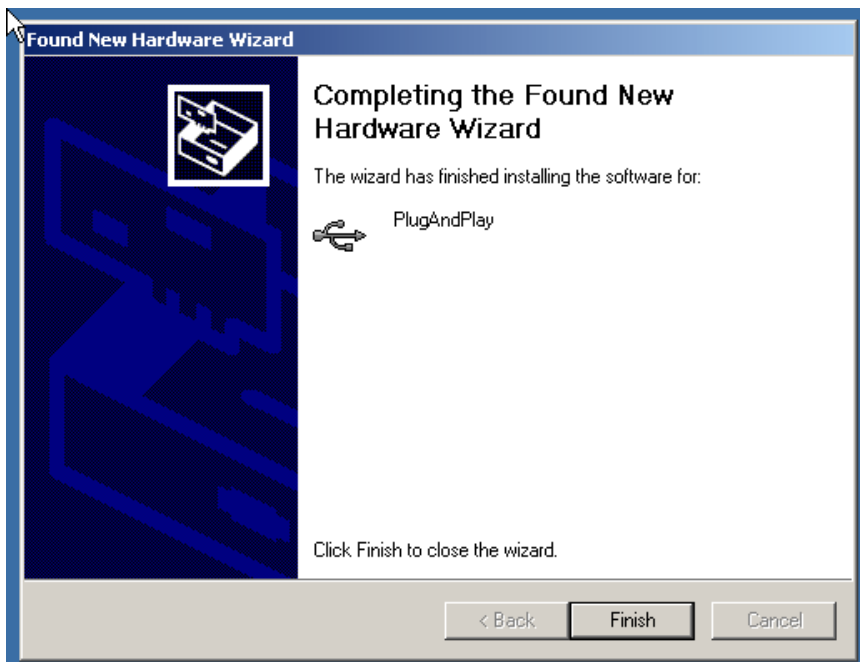
The above box will appear. Click “Next”.



The above box will appear.

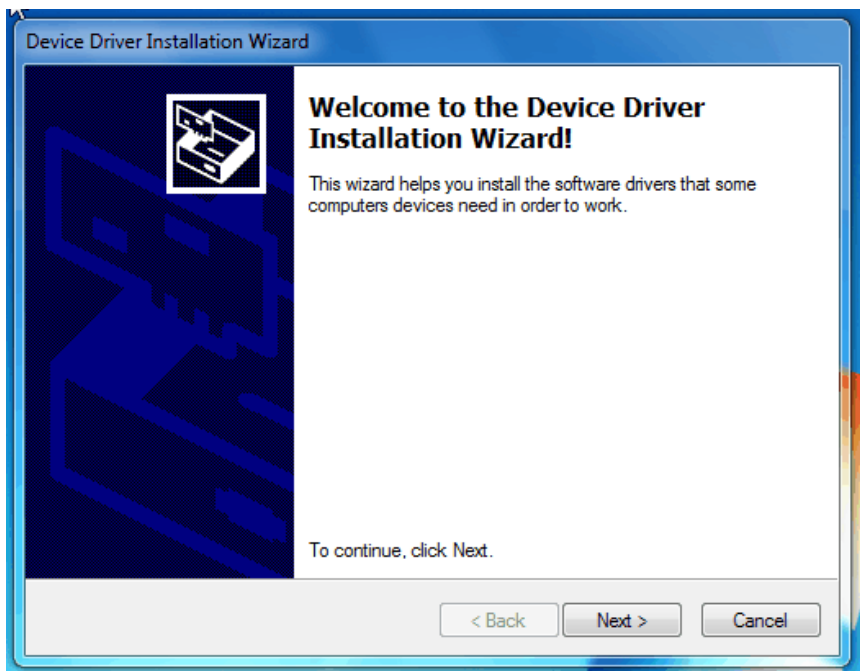


At some stage the following box will appear. Click the Continue Anyway” Button.

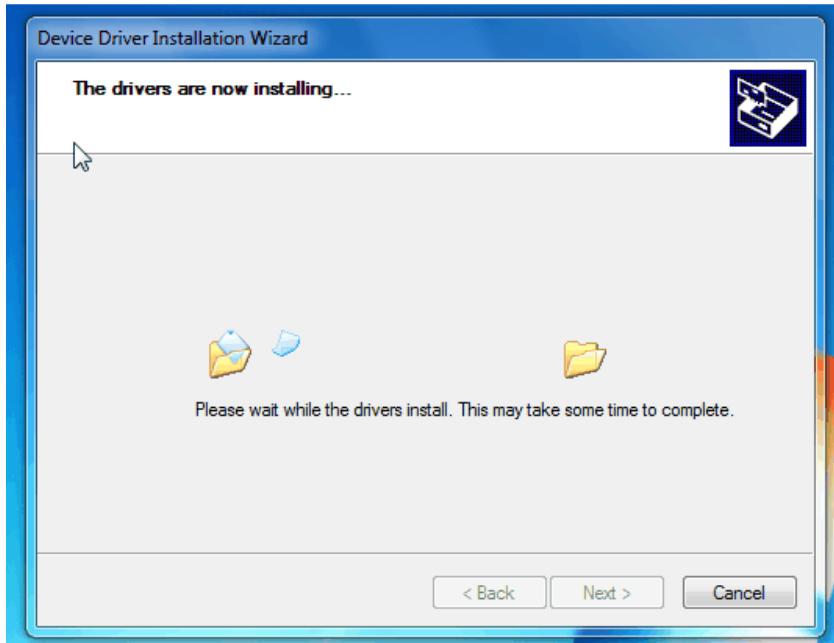


Once the install has completed the above box will appear. Click the “Finish” Button. The device driver is now installed and USBSpeedLink will detect the device.

64 Bit install.



The above box will appear. Click “Next” Button.

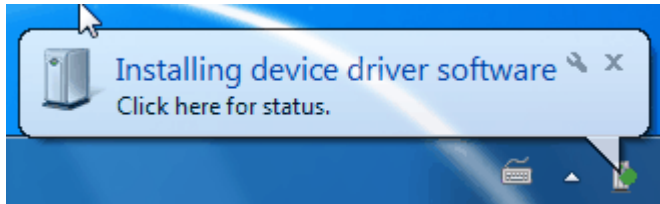


The driver will start to install.

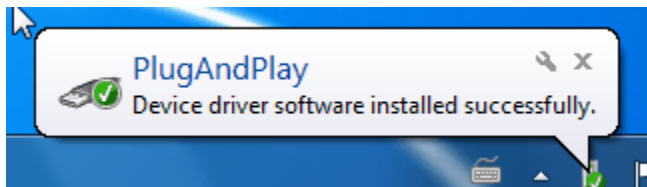


Once installed the following box will appear. Click “Finish”.

Connect device to USB port. The following message will appear.

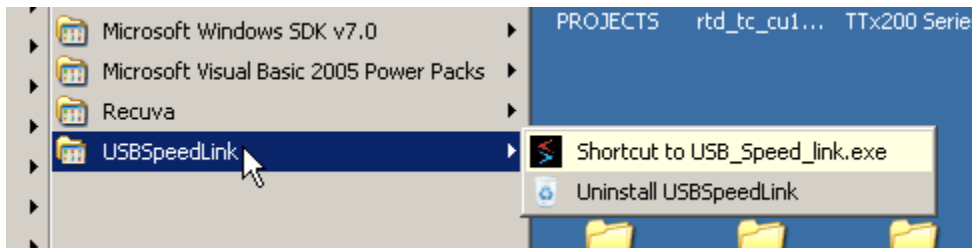


Then the following message.



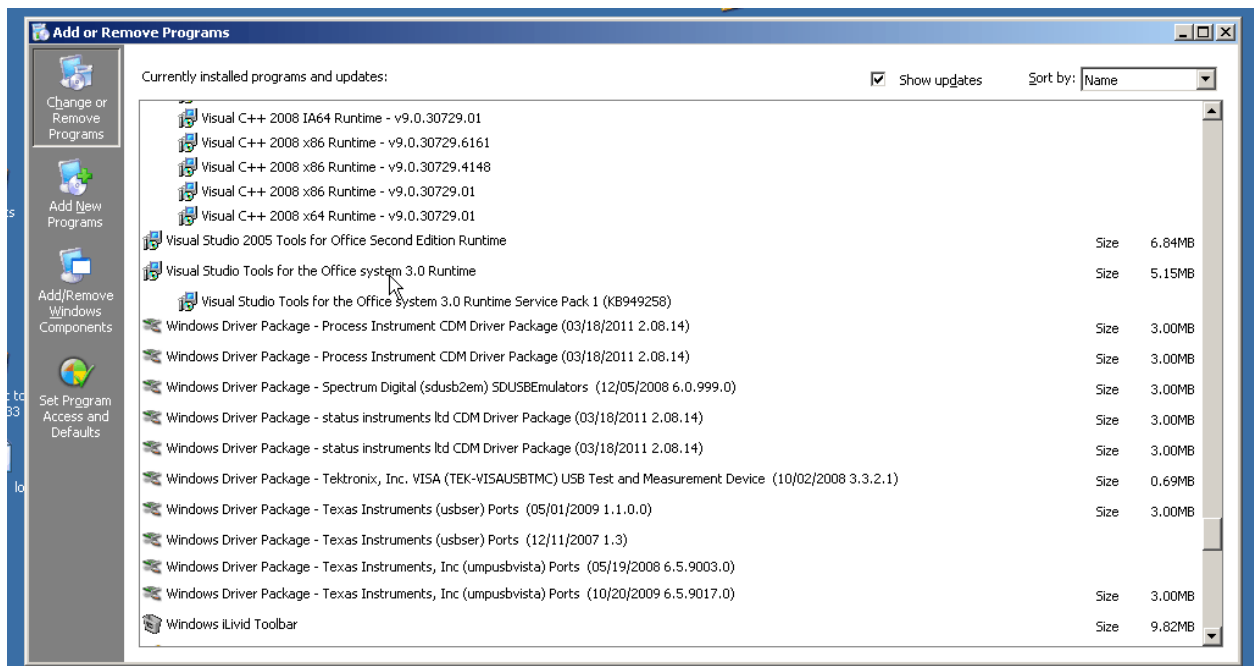
Driver install is now complete.

To uninstall USBSpeedLink software, simply click the uninstall option in the program menu.



To uninstall driver package.

Use control box (Uninstall programs) function.



Uninstall the following driver packages.

